



Services Proposal

PROPOSED BY 



Beyond Clean. Healthy Clean

'BEYOND CLEAN. HEALTHY CLEAN.'

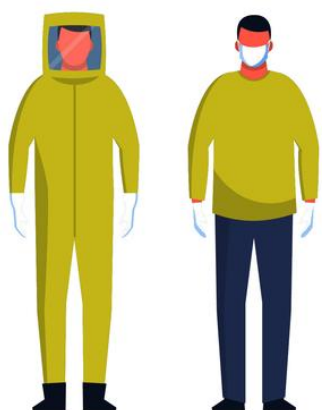
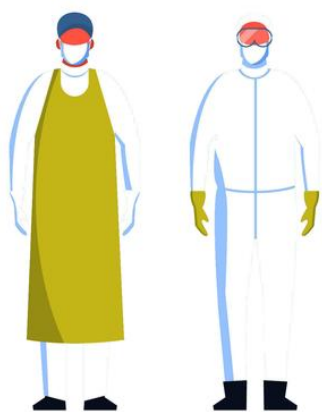
**OUR MOTTO IS SIMPLE AND EFFECTIVE,
JUST LIKE OUR SERVICES.**

LIME Services is a group company of Ahuja Residency Pvt. Ltd, which was established in 1982. Ahuja Residency is one of Delhi NCR's leading providers of quality guest houses, corporate housing, serviced apartments, furniture rentals and professional deep cleaning services.

PROFESSIONAL CLEANING SERVICES FOR THE DISCERNING.

We've been cleaning homes & apartments for nearly 30 years so we know how to keep things clean! All our cleaning teams undergo extensive training on chemicals, machines, and methods for deep cleaning services. LIME Services ensures that you get a 'HEALTHY CLEAN' service each and every time we visit.

We take full responsibility to provide healthy and hygienic cleaning to your home/establishment. We aim to clean each customer's premises professionally and safely.



OUR MANAGEMENT

Compared to app-based and local services, we at LIME Services are the right mix of experienced and highly knowledgeable cleaning service professionals. The same has helped LIME Services bring forth a wealth of fresh ideas, processes and services.



6 VALUES THAT SET LIME APART

01

METICULOUS APPROACH

At LIME Services, we provide a systematic approach to keep our customers' premises clean and look good.

02

QUALITY CONTROL

We offer strong quality control and supervision for cleaning details.

03

CUTTING EDGE TOOLS

We only use the best machines, tools and chemicals to perform cleaning tasks. We use internationally renowned machines from Karcher (Germany).

04

CUSTOMISED SERVICE

We are a customer-focused and customer-driven company & we offer deep cleaning services in Delhi/NCR, employing some of the best professional cleaning staff.

05

RELIABLE & FLEXIBLE

Our deep cleaning services are reliable, thorough, consistent, and flexible. If there is a particular area that you would like us to pay extra attention to, we can cater to it. We are flexible to work, 24x7.

06

IPHA CERTIFIED & COVID-19 TRAINED

Our employees are thoroughly verified by the police authorities. External and credential checks are carried out periodically to ensure that all permissions and qualifications are up-to-date. Our employees are certified by IPHA and COVID trained to use the right chemicals and machines to carry out professional cleaning and maintain personal hygiene.

Beyond Clean. Healthy Clean



3 DIFFERENT PACKAGES

It's important for you to know what you've signed up for, (ii) to understand the process of sanitisation in order to cooperate with the process, and (iii) to help maintain it for as long as possible.

At Lime we detail the scope of work in a manner that helps you make an informed buying decision.

AREAS WE CLEAN

- Homes (including cars & vehicles)
- Corporate Offices
- Restaurants/Industrial Kitchens
- Auditoriums
- Cinemas and Multiplexes
- Clinics and Hospitals
- Shops

*VIRUS PROTECTION SERVICE AND ABOVE PACKAGES INCLUDE:

- Floor Cleaning and Glass Cleaning (till reachable area)
- Staircases, Main and Back Entrances
- All Common Areas
- Detailed dusting from top to bottom
- Hard Surface Cleaning - Scrubbing and buffing of hard surfaces
- Thorough Restroom Cleaning - all taps, fittings, WC, washbasin, tiles, floor, skirting cleaning
- Window Glass Cleaning – Cleaning of all window and window channels from inside and outside. (Till reachable)
- Switch plates and sockets – Cleaning of all switches and sockets.

SPECIFIC SPACES WE SANITISE:

- **Fogging services:** Spatial sanitisation using ULV (ultra low volume) fogging machine
- **Virus Protection Services*:**
 - Spatial sanitisation using ULV fogging
 - Wiping down of contact surfaces
 - Pre-cleaning - disinfection - post-disinfection cleaning
- **Complete Sanitisation Service*:**
 - Spatial sanitisation using ULV fogging
 - Wiping down of contact surfaces
 - Pre-cleaning - disinfection - post-disinfection cleaning
 - Special treatment for soft & porous surfaces
 - Drapes & curtains to be sanitised using steam
 - Food prep & Service Areas to be cleaned with special chemicals



HOW WE WORK

HYGIENIC SANITISATION PROCESS TO SANITISE THE OFFICE PREMISES

Step 1: Surface Disinfection

Method:

Our trained and fully-equipped technicians will disinfect the sensitive surface areas first.

Process:

Surface disinfection will be carried out by a combination of steam sterilisation and wiping all the sensitive high touch areas, such as door knobs, door handles, railings, keyboards, desk phones, arm rests and other similar surfaces.

Step 2: Spatial Disinfection

Method:

Aerial disinfection will be carried out with the ULV (ultra low volume) Fogging machine and best quality prepared solution.

Process:

Spatial Disinfection will be performed by using specialized machines that dispense the specialized sanitizing solutions at a specific pace per second, to ensure uniform dispersion. The solution then merges with air and settles down over the various surfaces in the room, thereby sanitizing the complete room surface including all corners.

LUMINOMETERS

New!



Our Luminometer in action

PRE- AND POST-CLEANING LUMINOMETER TESTING IS DONE IN ORDER TO CHECK THE EFFECTIVENESS OF THE CLEANING

We use ATP (Adenosine Triphosphate) technology to truly make sure that the surface has been disinfected. It is present in all living and active microbial cells.

With the help of a luminometer and chemical reaction (similar to ones in fireflies!) we can detect just how free of microbial cells a surface is. The lesser, the cleaner!

Beyond Clean. Healthy Clean



STATE-OF-ART EQUIPMENT

THE LICENSED, STATE OF THE ART EQUIPMENT AND CERTIFIED CHEMICALS WE USE

CHEMICALS WE USE

- Virex II 256 (popular with large private hospitals, especially in operating theatres)
- SumaBAC (made to cut through grease/hydrophobic elements - mostly in restaurants and their kitchens)
- TR 101/TR 103 (ideal for upholstery and carpets - soft surfaces)
- Isopropyl Alcohol (lowest timing required on any surface - most convenient, and it cannot damage electronics or sensitive elements)

HI-TECH MACHINES WE USE

- Karcher (the German world leader in cleaning equipment) Steam Machine
- UPL-ULV Fogger Machine
- Micro Fogger Machine
- Karcher Vacuum Cleaners
- Puzzi Spray for carpet cleaning.

TOOLS WE USE

- Microfiber Dusters
- Mops
- Scrubbers

PPE (PERSONAL PROTECTIVE EQUIPMENT)

- Safety Eye Glasses
- PM 2.5 Face Mask
- Safety Gloves
- Special Protective and Sealed bodysuit
- Shoe Covers



Beyond Clean. Healthy Clean



CUSTOMER PREPAREDNESS

WHAT YOU NEED TO DO TO AID THE PROCESS

STEPS TO FOLLOW BEFORE LIME PERSONNEL ARRIVES FOR CLEANING AND DISINFECTION SERVICES

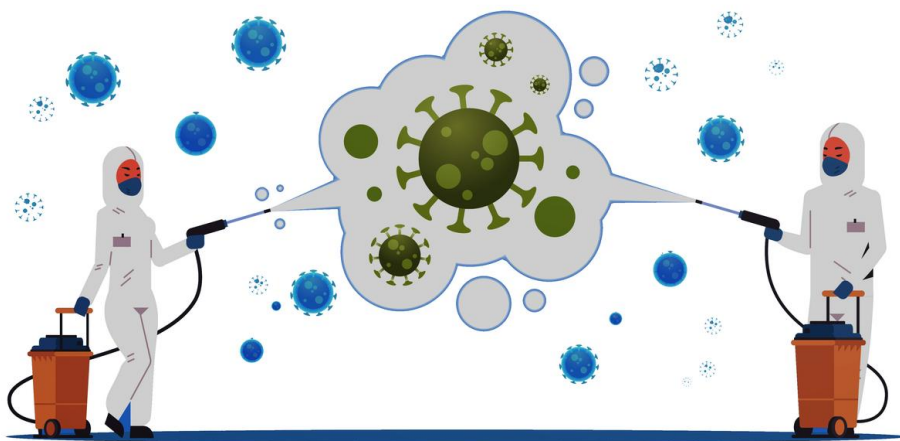
- Ensure all important or sensitive equipment is removed or covered with plastic sheets (non-removable items) - e.g. computers, television, printer, water dispenser, air purifier, loose paper sheets, research tools and equipment.
- Switch off all the air conditioners and close all ventilation gaps, before work starts.
- Remove food items from work stations and pantry areas.
- Remove any aquariums, open pet spaces (pet beds, pet mats, etc.).
- Intimate all employees to keep their personal belongings in storage.
- Perform regular cleaning before and after our treatment, because there might be minimal water stains, after the spatial sanitisation process is completed. (We also do a post-treatment wipe down).
- Keep all the air conditioners switched off and all the ventilation closed while work in progress.
- Prepare a place/plan to spend 2-3 hours away from the sanitisation site (a long drive, an empty park, etc.)

WHAT YOU MUST DO AFTER THE TREATMENT IS COMPLETE

- The enclosed treatment areas need to be quarantined for a minimum of 4 hours post the hygienic sanitisation service.
- After 4 hours, the air conditioners can be switched on and passage/room doors should be kept open for a period of 2 hours for proper ventilation.
- Post 2 hours of ventilation remove all covers from important or sensitive equipment and carry out regular cleaning.
- Strictly follow regular cleaning of high germ contamination spots, every few hours, through regular housekeeping. This shall help in maintaining the enhanced hygiene achieved through the treatment.
- Our service crew shall also guide you and any housekeeping staff on tips and treatments to maintain enhanced hygiene throughout the premises.

Disclaimer - Treating the space and surfaces kills pathogens with 99.9 percent effectiveness as per manufacturer guidelines and independent validation from regulatory websites such as CDC and EPA. Areas where there is high traffic of visitors have an elevated risk of re-contamination after the disinfection.

It is therefore recommended that standard safety measures of “face masks, hand washing/sanitisation and social distancing” be diligently followed to minimise infection. High traffic areas should also be re-disinfected periodically depending upon the amount of visitors coming into that space.



CONTACT INFORMATION

LIME Services is a unit of Ahuja Residency

CORPORATE OFFICE

Ahuja Residency Private Limited
302A-304, Emaar MGF Palm Springs Plaza
Golf Course Road, Sector 54,
Gurgaon - 122012
+91 124 7177 445/46

REGISTERED OFFICE

Ahuja Residency Pvt. Ltd.
N-3/36 DLF CityPhase - II
Gurgaon - 122012
+91 124 4019 335/37

HELPLINE NUMBER

8899 770 770

limeservices.in

Beyond Clean. Healthy Clean

